



InInternational Catalina 30/309 Association 2018 National Championship Regatta August 17-19, 2018

**Hosted by Columbia Yacht Club
Chicago, IL**



SAILING INSTRUCTIONS

1 RULES

- 1.1 The regatta will be governed by the rules as defined in *The Racing Rules of Sailing* (RRS).
- 1.2 The class rules are the *IC30A BYLAWS* (Adopted February 28, 2004) including Appendix 1, ONE DESIGN CLASS SPECIFICATIONS.
- 1.3 If each of the C30 Standard Rig (SR), Tall Rig with Bowsprit (TBS), and C309 sections do not have at least 3 boats they will be combined as one (1) handicap class. (This changes IC30A Bylaw IV A.)

2 NOTICES TO COMPETITORS

Notices to competitors will be posted on the official notice board located on yachtscoring.com, as well as on the corkboard attached to the sliding door entrance of the classroom.

3 CHANGES TO SAILING INSTRUCTIONS

Any change to the sailing instructions will be posted before 0800 hrs CDT on the day it will take effect, except that any change to the schedule of races will be posted by 2000 hrs CDT on the day before it will take effect.

4 SIGNALS MADE ASHORE

- 4.1 Signals made ashore will be displayed on the club flag mast at the top of the club ship.
- 4.2 When flag AP is displayed ashore, "1 minute" is replaced with "not less than 90 minutes" in the race signal AP.

5 SCHEDULE OF RACES

- 5.1 The dates and number of races scheduled for all classes are as follows: _

<u>Day</u>	<u>Date</u>	<u>Scheduled</u>
Friday	August 17	1 practice race
Saturday	August 18	3 races
Sunday	August 19	2 races

- 5.2 The scheduled time of the warning signal for the first race each day is 1030 hrs CDT, except the practice race on Friday, which will be 1730 CDT.
- 5.3 To alert boats that a subsequent race will begin soon after the last boat finishes the preceding race, multiple sounds will signal 1 minute before a warning signal is made.
- 5.4 Flag A displayed, with no sound, while boats are finishing means “No more racing today”.
- 5.5 On Sunday, no warning shall be made after 1330 hrs CDT.

6 CLASS FLAGS

- 6.1 Class flags will be:

Class	Boat Flag	Class Flag
Spinnaker Class	Blue	Pennant 5
Jib and Main (1) Class	White	Pennant 8
Jib and Main (2) Class	Green	Pennant 9

- 6.2 Each boat’s flag is provided in her registration package and shall be flown conspicuously on her backstay.

7 RACING AREA

The Starting area will be located at or near North 41 53.00/West 087 33.00

The Starting area SA7 for the Friday night Practice Race is N 41 51.17/W 87 33.41

8 THE COURSES

Illustration B shows the courses.

- 8.1 The courses to be sailed will be windward-leeward with 2, 4 or 6 legs or a Triangle. The attached Course Diagram shows the course and the side on which each mark is to be left. The official length of the Course shall be determined by the Race Committee and shall not be grounds for redress.
- 8.2 The number of legs, the approximate magnetic bearing and distance to the first rounding mark (Marks W1) will be displayed from a sign-board on the Race Committee Signal Boat with or before the Warning Signal. The Triangle course will be 5 legs.
- 8.3 Friday Night Practice Race will be at the Columbia Beer Can Circle starting at SA7 (N 41 51.17/W 87 33.41). The course will be two legs of 1 ¼ miles. The rounding mark will be the white beer can buoy. The race committee will display the bearing to the mark on a sign-board on the Race Committee Signal Boat.

9 MARKS

- 9.1 Marks will be orange tetrahedrons.
- 9.2 Yellow tetrahedrons will be used to change a leg of the course, subsequent changes will go back to the original mark color.
- 9.3 The start/finish mark will be a yellow circular inflatable.

10 THE START

10.1 The class flags and starting order are as follows. Competitors should be aware that the starting order may be altered at any subsequent race.

Class Flags	5	8	9
	Spin	Jam 1	Jam 2

10.1 The starting line will be between a staff or halyard displaying an orange flag on the race committee signal boat at the starboard end and the course side of port-end starting mark.

10.2 Boats whose warning signal has not been made shall avoid the starting area during the starting sequence for the other classes.

10.3 A boat starting later than 15 minutes after her starting signal shall be scored Did Not Start (DNS). This changes rules A4 and A5.

10.4 The race committee will attempt to hail any recalled boat on VHF channel 69. Failure to make a broadcast or to time it accurately will not be grounds for redress. This changes rule 62.1(a).

11 CHANGE OF THE NEXT LEG OF THE COURSE (Spinnaker Class only)

To change the next leg of the course, the race committee will lay a new mark of a different color (or move the finishing line) and remove the original mark as soon as practicable. When in a subsequent change a new mark is replaced, it will be replaced by a mark of the original color.

12 THE FINISH

12.1 The finishing line will be between a staff or halyard displaying a blue flag on a race committee boat at the starboard end and the course side of port end finishing mark.

13 PENALTY SYSTEM

For all classes, rule 44.1 is changed so that the Two-Turns Penalty is replaced by the One-Turn Penalty.

14 TIME LIMITS

14.1 The time limit for each race is 3 hours.

14.2 Boats failing to finish within 30 minutes after the first boat of her class sails the course and finishes will be scored Did Not Finish (DNF) without a hearing. This changes rules 35, A4 and A5.

15 PROTESTS AND REQUESTS FOR REDRESS

15.1 Protest forms are available at the main office of Columbia Yacht Club.

15.2 The protest time limit is 60 minutes after the last boat has finished the last race of the day.

16 SCORING

16.1 One completed race constitutes a regatta.

16.2 One design scoring will be used for all classes.

16.3 If more than three races are completed, one discard will be declared. This changes RRS A2.

17 SAFETY REGULATIONS

17.1 Check-in: prior to the first race each day, after the hoist of flag L and before or with her warning signal, boats shall sail past the stern of the race committee signal boat on starboard tack, and shall hail their sail numbers and boat name. Failure to do so is not grounds for protest my competitors

17.2 After checking in, a boat that retires from a race shall notify the race committee as soon as practicable, regardless of whether the boat is in the vicinity of the starting area or the race course. Notify the race committee by hail or on VHF 69 and receive an acknowledgement.

18 RADIO COMMUNICATION

18.1 A boat shall neither make radio transmissions while racing nor receive special radio communications not available to all boats except as permitted by the Notice of Race and these Sailing Instructions.

18.2 Competitors should monitor VHF channel 69 for broadcasts made by the race committee.

19 CONTACT

Regatta Chair
Mike Hettel
<u>michael.e.hettel@gmail.com</u>

Illustration A

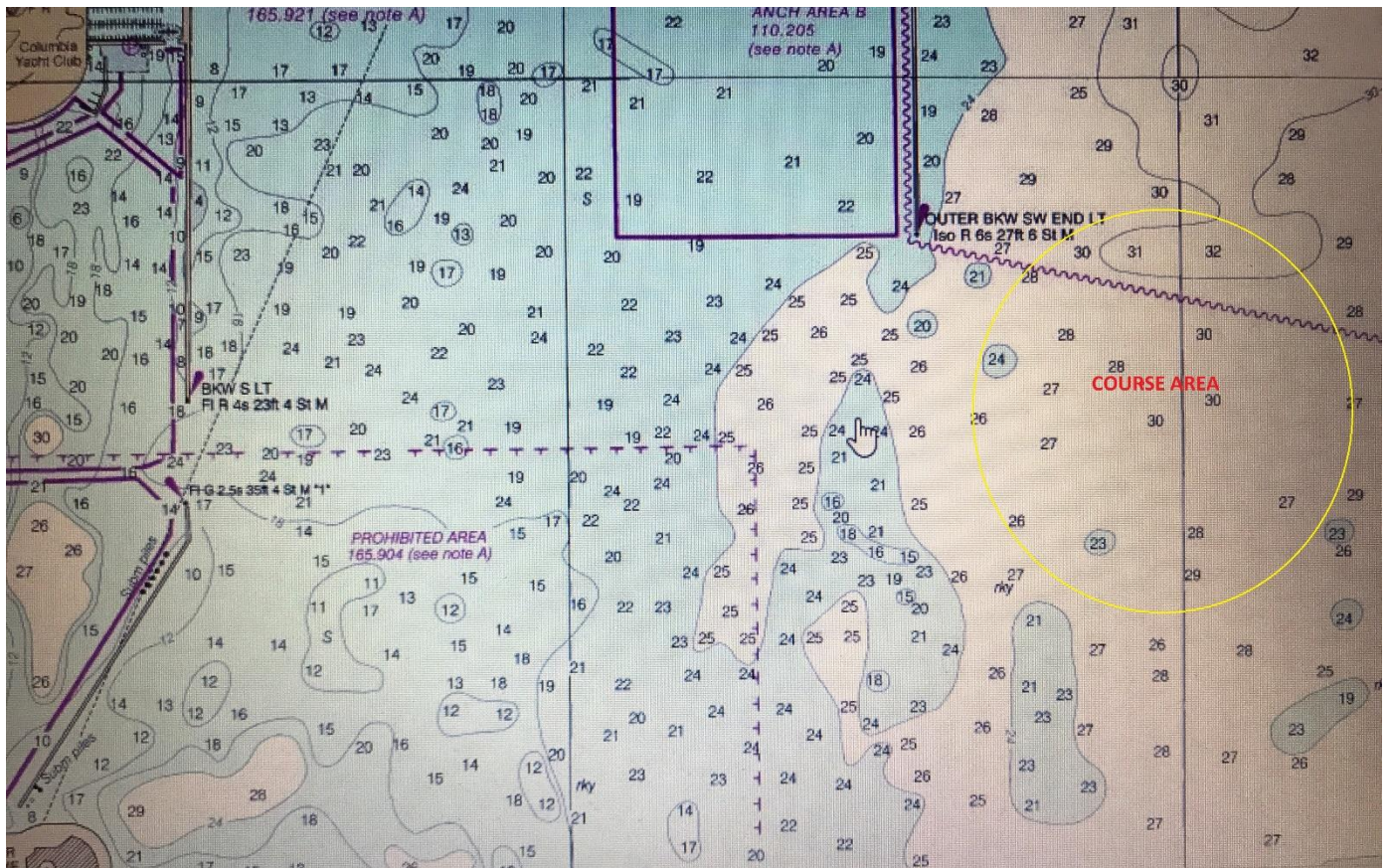
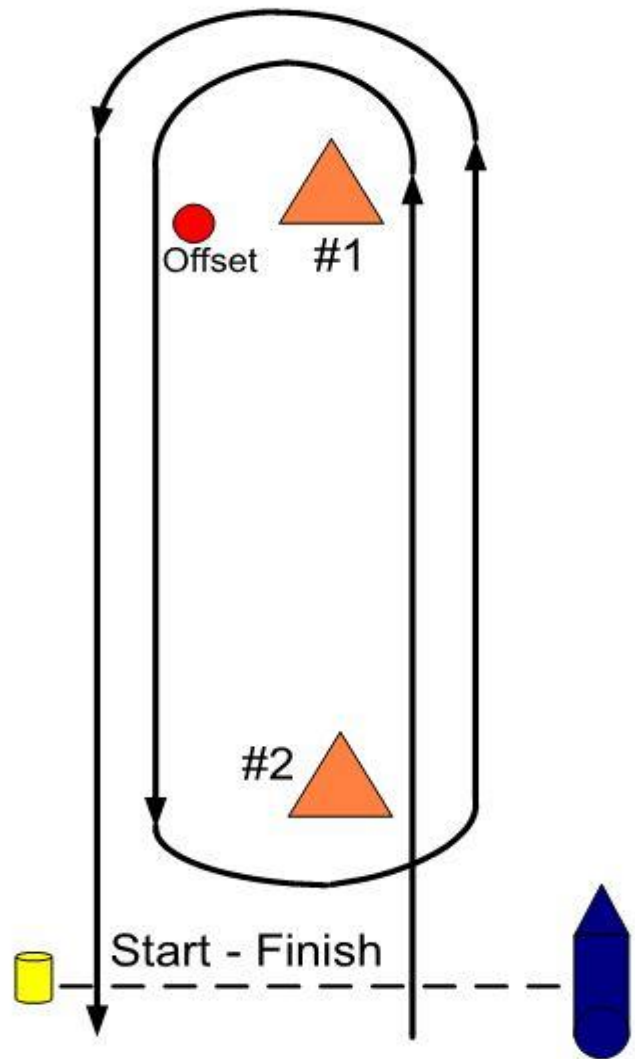


Illustration B

Course: Windward/Leeward



W - Even # of legs

Course: Triangle

